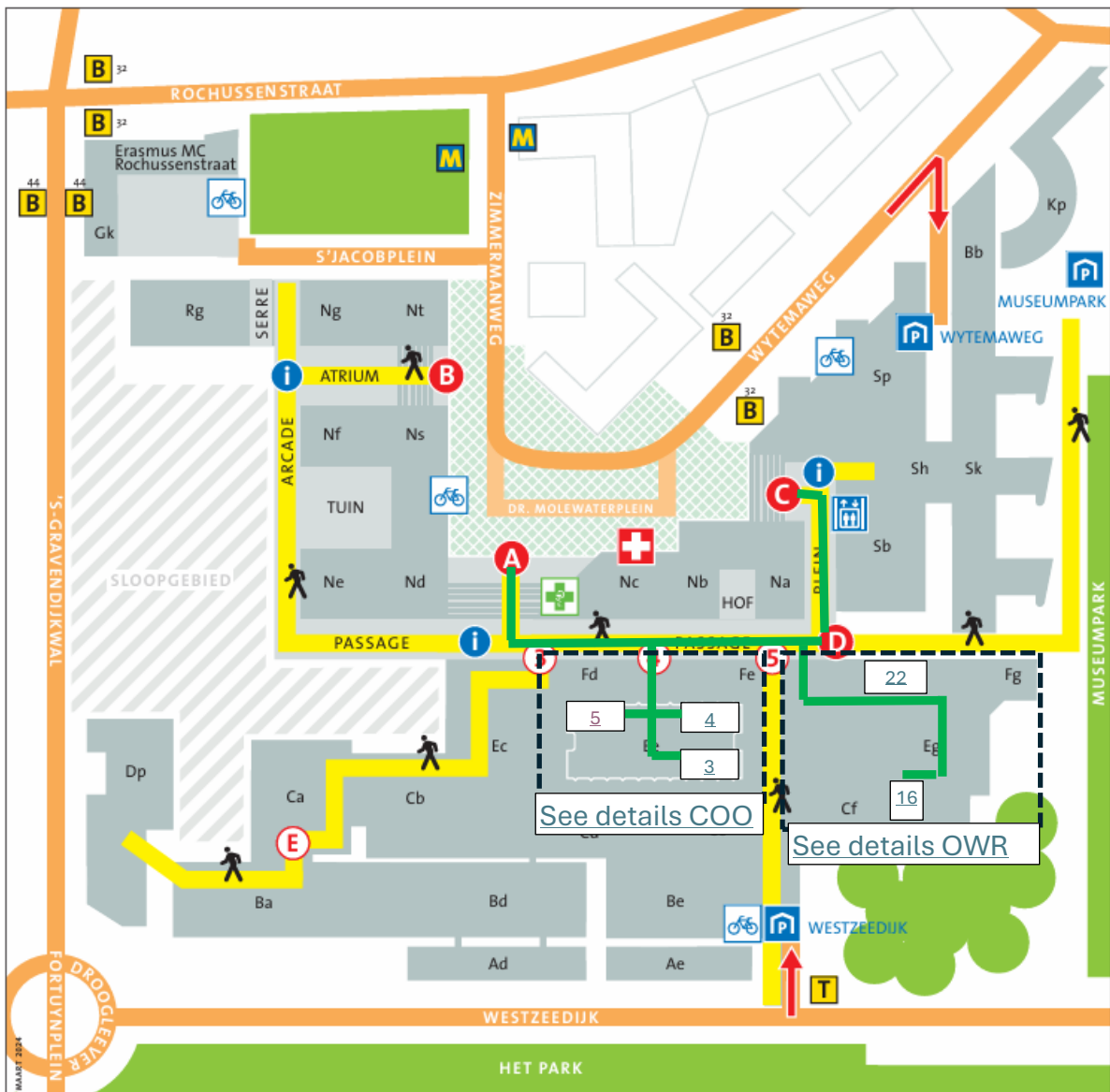


Route to computer education rooms Erasmus MC



See a more detailed map and description with photos:

[OWR-16](#)

[OWR-22](#)

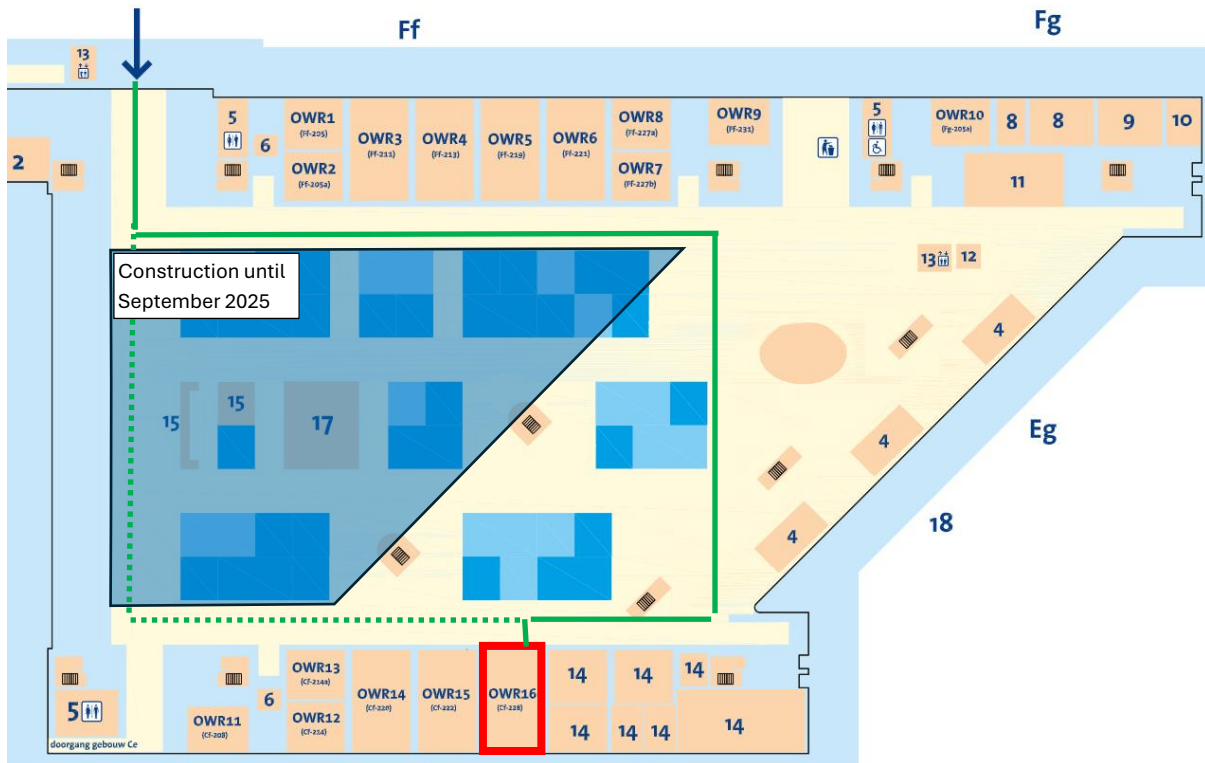
[COO-5](#)

[COO-4](#)

[COO-3](#)

OWR-16

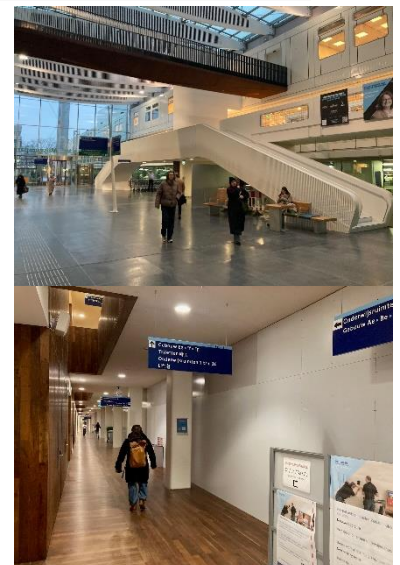
Ingang Onderwijscentrum



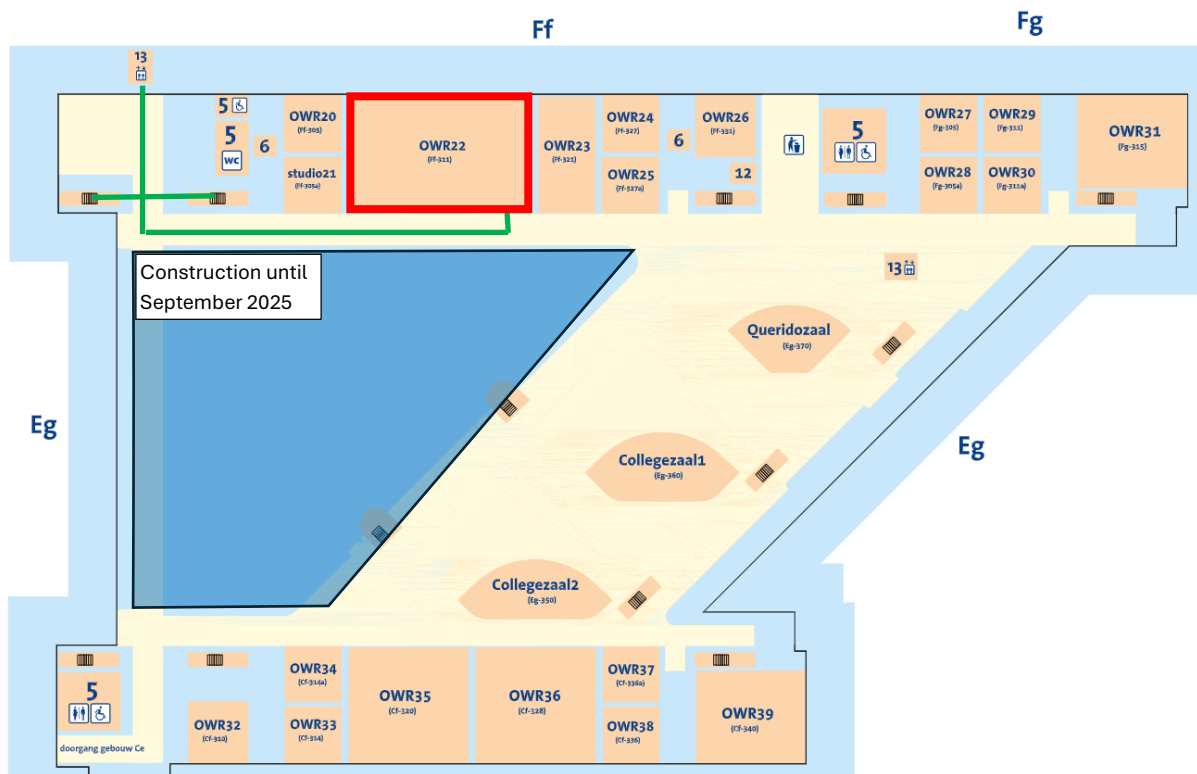
- In the main hall, at the corner of Plein and Passage (opposite to Etos) take the white stairs (or elevator) up one level →
- Enter the Educational Center (Onderwijscentrum) through the swing doors
- Due to construction, until September 2025 you have to follow a detour
- Go left, and follow the wall of the construction site →



- ← At the end of the wall turn right and cross the study area
- At the other side, turn right and walk towards Computer room OWR-16 on your left hand side



OWR-22



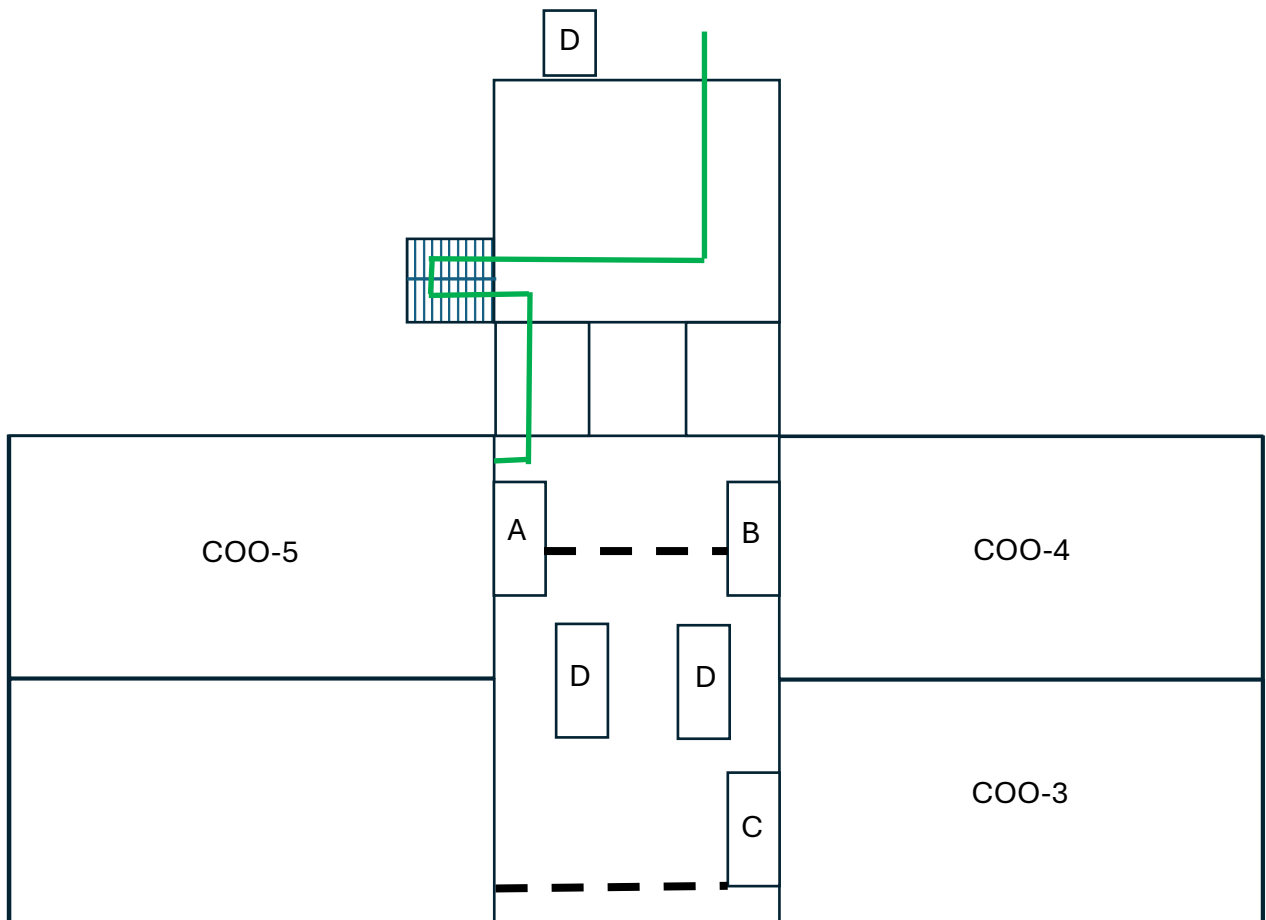
- In the main hall, at the corner of Plein and Passage (opposite to Etos) take the white stairs up one level (or take the elevator up two levels, skipping the next two steps) →
- Enter the Educational Center (Onderwijscentrum) through the swing doors
- Take one of the stairs to your left or right up one level →



- ← Continue in the direction you were going and immediately turn left
- You will see Computer room OWR-22 on your left hand side



COO-5



A: Porter's Lodge B: Canon Copyservice C: Coffee Corner D: Elevators

The dotted line between A and B has gates that can only be opened with an Erasmus MC Employee pass.

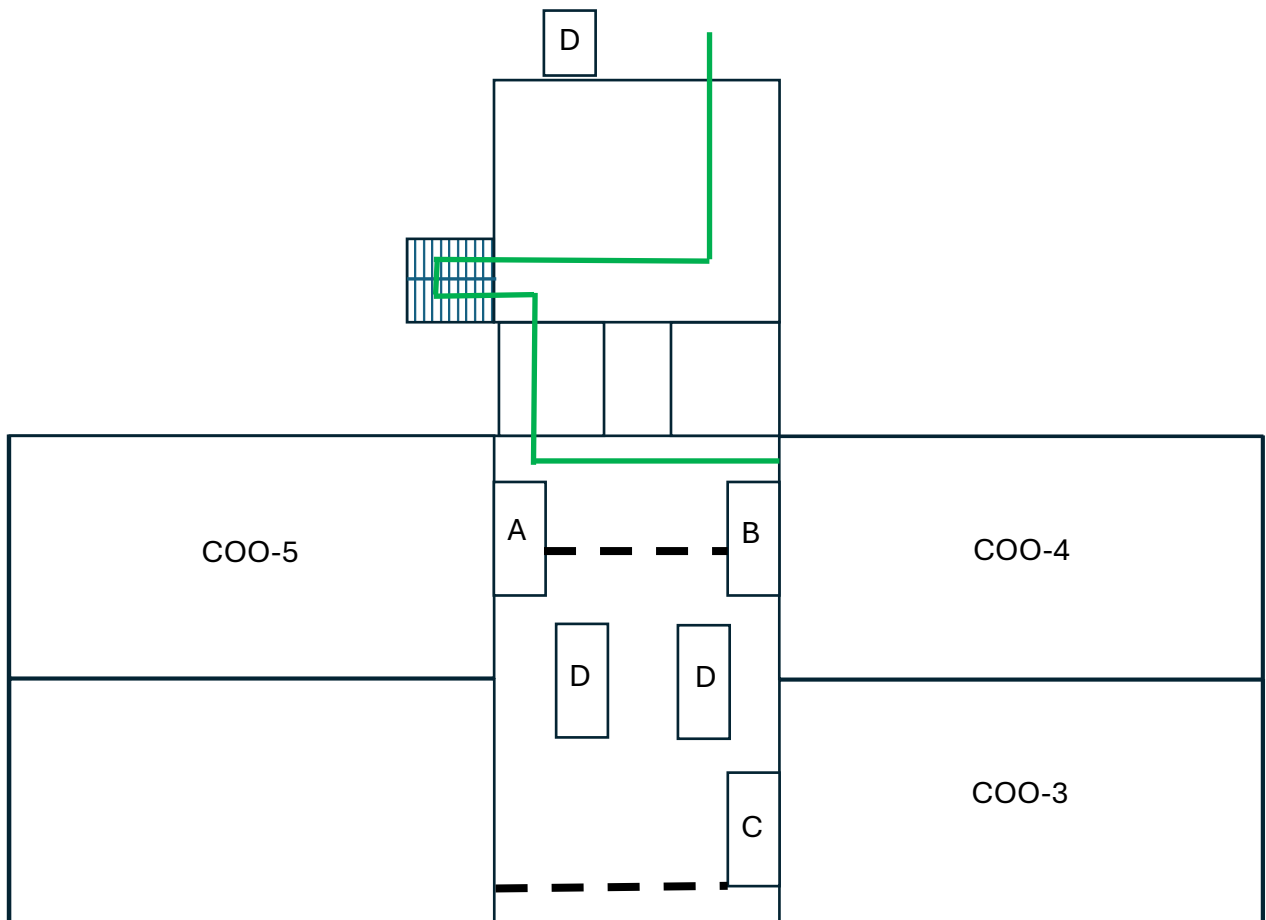
- In the middle of the great hall (passage) opposite the Albert Heijn supermarket take the white stairs up one level (or the elevator up two levels, in that case skip the next 3 steps) →



- Enter through the swing doors (the right one is often out of order)
- ← Walk to the right back side of the hall, and take the stairs up one level
- Coming from the stairs turn right →
- Enter through the double swing doors
- ← Before the Porter's lodge and gates go right and enter COO-5



COO-4



A: Porter's Lodge B: Canon Copyservice C: Coffee Corner D: Elevators

The dotted line between A and B has gates that can only be opened with an Erasmus MC Employee pass.

- In the middle of the great hall (passage) opposite the Albert Heijn supermarket take the white stairs up one level (or the elevator up two levels, in that case skip the next 3 steps) →

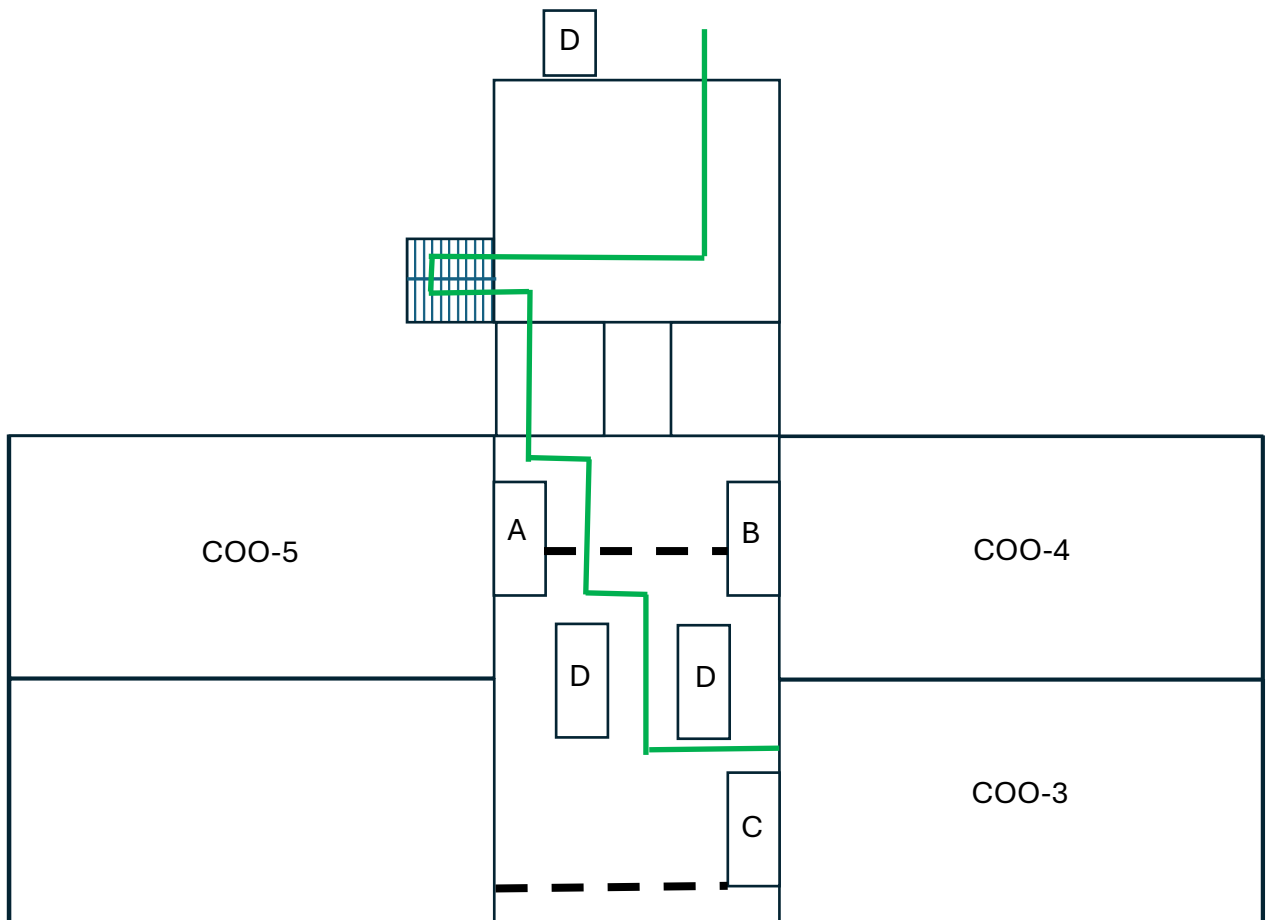


- Enter through the swing doors (the right one is often out of order)
- ← Walk to the right back side of the hall, and take the stairs up one level
- Coming from the stairs turn right →
- Enter through the double swing doors



- ← Before the gates turn left and Enter COO-4 via the hall next to the Canon Copyservice

COO-3



A: Porter's Lodge B: Canon Copyservice C: Coffee Corner D: Elevators

The dotted line between A and B has gates that can only be opened with an Erasmus MC Employee pass.

- In the middle of the great hall (passage) opposite the Albert Heijn supermarket take the white stairs up one level (or the elevator up two levels, in that case skip the next 3 steps) →
- Enter through the swing doors (the right one is often out of order)



- ← Walk to the right back side of the hall, and take the stairs up one level
- Coming from the stairs turn right →
- Enter through the double swing doors
- Enter the closed space via the gates. These can be opened with an Erasmus MC employee pass. If you don't have one, you can ask for one at the Porter's Lodge.
- ← After the elevators turn left and enter COO-3 via the hall left of the Coffee corner

